



Greene Mews, Bury St. Edmunds, Suffolk, IP33 1QL

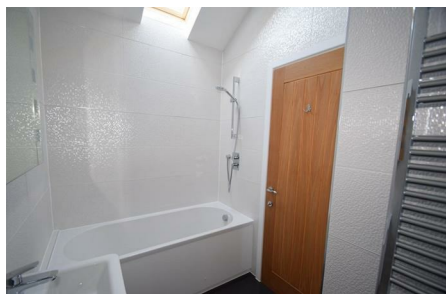
Rent - £1,650 PCM Deposit - £1,903

Nestled in the charming locale of Greene Mews, Bury St. Edmunds, this delightful coachhouse offers a perfect blend of modern living and comfort. With two well-proportioned bedrooms, this property is ideal for couples, small families, or those seeking a peaceful retreat. The two bathrooms provide convenience and privacy, ensuring that morning routines are a breeze.

The heart of the home is the inviting reception room, which serves as a versatile space for relaxation or entertaining guests. Natural light floods the area, creating a warm and welcoming atmosphere. The layout is thoughtfully designed, making the most of the available space while maintaining a sense of openness.

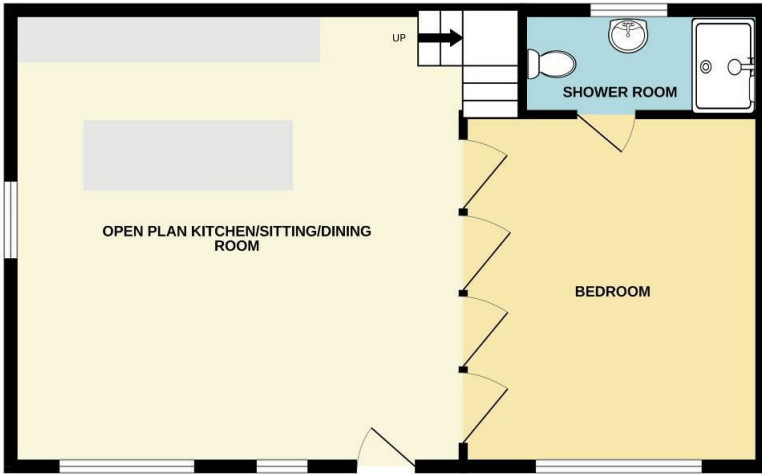
For those with a vehicle, the property includes parking for one car, a valuable feature in this desirable area. Greene Mews is known for its friendly community and proximity to local amenities, including shops, parks, and excellent transport links, making it an ideal location for both work and leisure.

- COACH HOUSE
- 2 BEDROOMS
- SPACIOUS OPEN PLAN KITCHEN/SITTING/DINING ROOM
- SHOWER ROOM & FAMILY BATHROOM
- DESIGNATED PARKING
- SECURE GATED DEVELOPMENT
- GAS HEATING & ENERGY RATING - C
- APPROXIMATE SIZE - 968 SQFT
- COUNCIL TAX BAND - C
- AVAILABLE MID APRIL

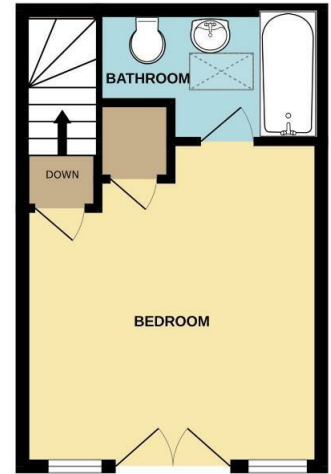


Council Tax Band: C - EPC Rating: C 78

GROUND FLOOR



1ST FLOOR



Whilst every attempt has been made to ensure the accuracy of the floorplan contained here, measurements of doors, windows, rooms and any other items are approximate and no responsibility is taken for any error, omission or mis-statement. This plan is for illustrative purposes only and should be used as such by any prospective purchaser. The services, systems and appliances shown have not been tested and no guarantee as to their operability or efficiency can be given.
Made with Metropix ©2024

